

USB2.0 TO RS422 / RS485 CABLE

Please read the product manual carefully before using the product

1、 Summarize

With the continuous development of the PC industry, USB interface is substituting the old industrial and low speed PC interface, but there are so much important equipment still use the RS485/RS422 interface in the industrial environment. So many users have to use the USB to RS485 / RS422 converter to realize the data transfer between PC and RS485 / RS422 equipment.

The universal USB2.0 TO RS422 / RS485 converter, which is without additional power supply, compatible with USB, RS422, RS485 standards. It can convert USB signals to a balanced differential RS422 or RS485 signals. Each line has surge protection, and various surge voltage protections. The tiny capacitance distance guarantees RS422 / RS485 interface of high-speed automatic. RS422, RS485 connect by DB9 interface. Converter with zero delay automatic transceiver inside, unique I/O circuit automatically control data flow direction, without any handshake signals (such as RTS, DTR, etc.) and jumpers set realize full-duplex, half-duplex mode conversion, plug and play. Ensure the product fit for all existing communication software and hardware interface.

USB TO RS422/RS485 converters for point-to-point, point-to-multipoint reliable communications. Provides the point to more each converter allows connecting 256RS422 or RS485 devices, data rate of 300 to 300000bps. The power and data flow indicator light will show fault if any breakdown. Support of communication has USB to RS422, USB to RS485.

2、 Function

- USB TO RS422/485 converter supports four communication modes:
1. Point-to-point / 4-line full-duplex;
 2. Point-to-multipoint / 4-line full-duplex;
 3. Point-to-point / 2-line half-duplex;
 4. Point-to-multipoint / 2-line half-duplex.
- When the converter is working at full-duplex or half-duplex, needs to add a matched resistance to avoid reflects and disturbance of signal. (120Ω, 14W)

3、 Installation and utilization

Please read carefully product manual before instal DT - 5019 converter, then insert USB cable which attached to USB port. This product use USB/DB9, general connectors for input/output interface without jumpers, automatically identify RS422 or RS485 communication mode. Fit for twisted-pair cable or shielded wire connection, very convenient to disassemble. Point-to-point, point to more, full-duplex communication that connect four wire T/R+, T/R- and RXD+, RXD-, point-to-point, point to more, half-duplex communication that connect two lines T/R+, T/R-.

4、 Performance parameter

- (1) standard: conforming to USB2.0 standard, downward compatible and RS422 and RS485 standard
- (2) USB signals: VCC, DATA+, DATA-, GND
- (3) RS422 signals: T/R+, T/R-, RXD+, RXD-, GND
- (4) RS485 signals: T/R+, T/R-, RXD+, RXD-, GND
- (5) operation way: asynchronous work, point-to-point or multi-point, 4-line full duplex, 2-line half duplex
- (6) direction control: automatic data flow control technology is adopted to automatically identify and control the direction of data transmission
- (7) load capacity: support point-to-multipoint, each converter can connect 256pcs of RS422 or RS485 interface devices
- (8) transmission distance: rs422/485 end 1200 meters, USB cable up to 5 meters

- (9) interface protection: surge 600W protection power, ±15KV electrostatic protection
- (10) interface form: connector connection of USB end type A interface male head and DB9 male head
- (11) signal indication: red lamp power supply, green lamp send signal, yellow lamp receive signal
- (12) transmission medium: twisted pair or shielded wire
- (13) transmission rate: 300-3000000 BPS
- (14) operating environment: -25°C to 70°C, with a relative humidity of 5% to 80%;
- (15) support Windows/Mac/operating system.
- (16) support protocols: support point-to-multipoint, 1, 1.5, 2; Support verification bits: none, even, odd, mark, space
- (17) support 512 byte transmit buffer and 512 byte receive buffer

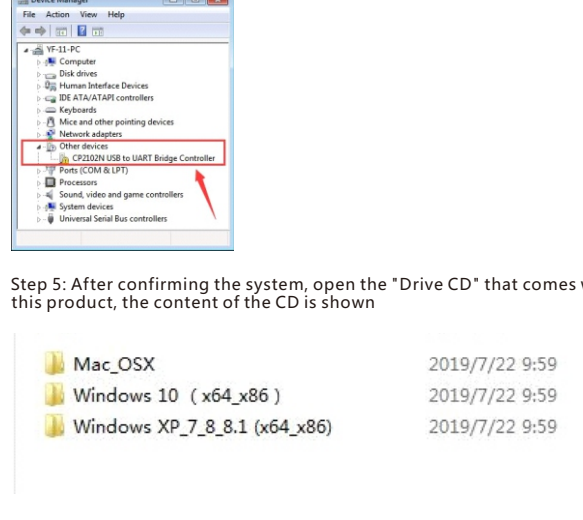
5、 Interface and signal

DB9 pin	Output signal	RS422 Full-duplex connection	RS422 Half-duplex connection
1	T/R+	TXD(A+)	RS485(A+)
2	T/R-	TXD(B-)	RS485(B-)
3	RXD+	RXD(A+)	N/A
4	RXD-	RXD(B-)	N/A
5	GND	GND	GND

USB output signal and lead foot

RS485/RS422 Pin definition diagram

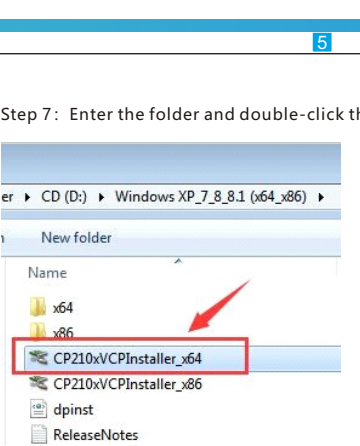
6、 Connection instruction



USB2.0 TO RS422/RS485 CABLE Driver installation instructions

Please read the product manual carefully before using the product

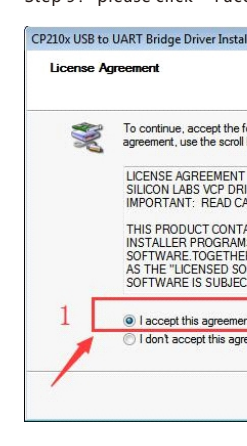
Step 1: Put the mouse on the "Computer" icon, click the "right mouse button", and then click "Properties"



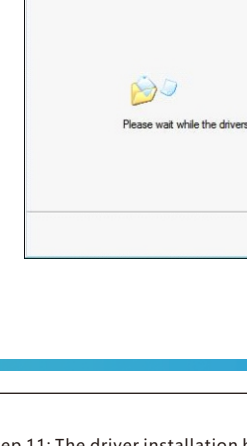
Step 2: Click the "Device Manager"



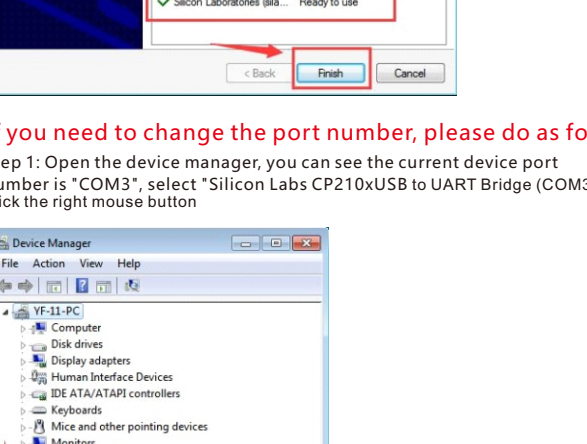
Step 3: When the driver is not installed, you can see the following information on the device manager



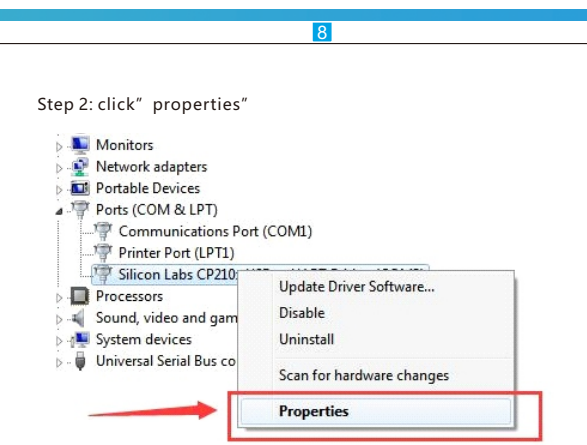
Step 4: Before installing the driver, check the computer system



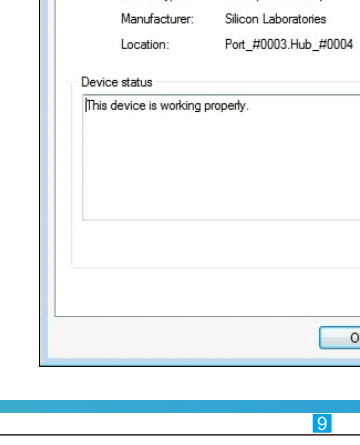
Step 5: After confirming the system, open the "Drive CD" that comes with this product, the content of the CD is shown



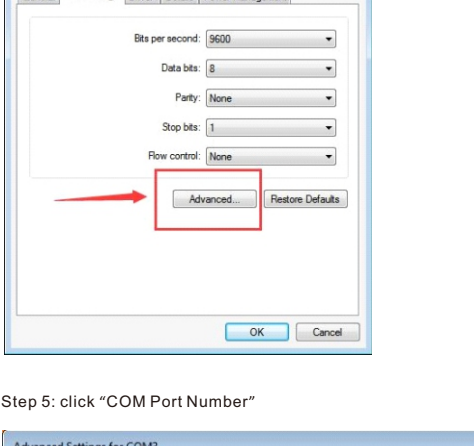
Step 6: Select the corresponding system file to install (take windows 7_64 bit system as an example)



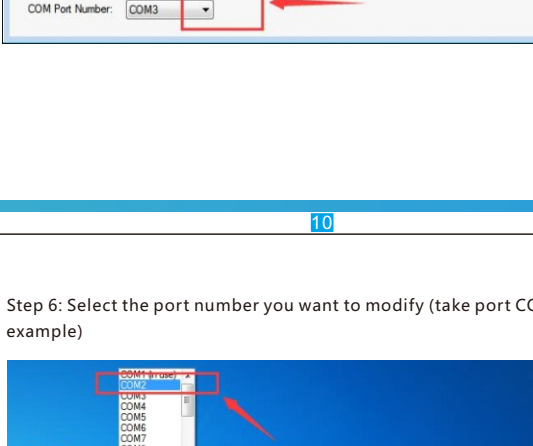
Step 7: Enter the folder and double-click the "CP210xVCPInstaller_x64" file



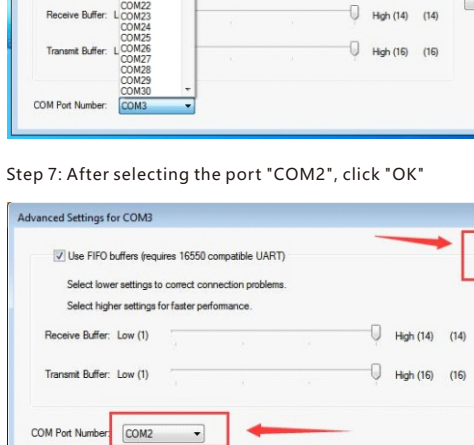
Step 8: Please click 'Next'



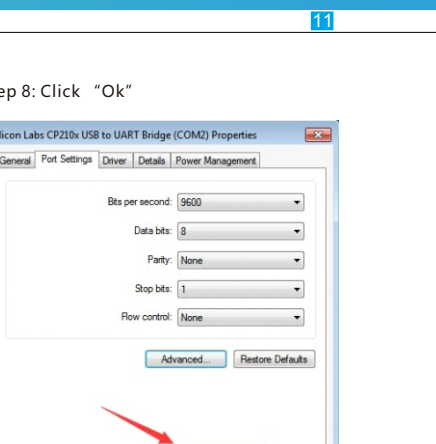
Step 9: please click "I accept this agreement", and then click "Next"



Step 10: The driver is being installed, please wait

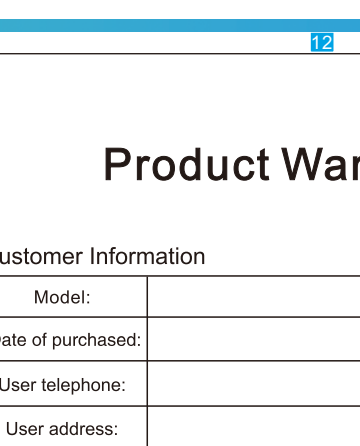


Step 11: The driver installation has been completed, please click "Finish"

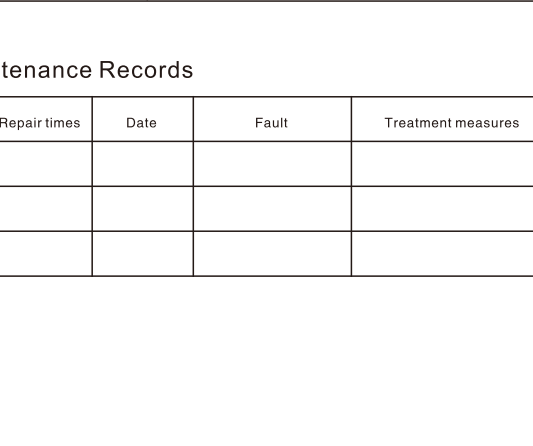


If you need to change the port number, please do as follows

Step 1: Open the device manager, you can see the current device port number is "COM3", select "Silicon Labs CP210xUSB to UART Bridge (COM3)", click the right mouse button



Step 2: click "properties"



Step 3: click "port settings"

Step 4: click "Advanced"

Step 5: click "COM Port Number"

Step 6: Select the port number you want to modify (take port COM2 as an example)

Step 7: After selecting the port "COM2", click "OK"

Step 8: Click "Ok"

Step 9: In the device manager, you can see that the port has been modified to port "Silicon Labs CP210xUSB to UART"

Product Warranty Card

Customer Information

Model:	
Date of purchased:	
User telephone:	
User address:	
Distributor:	
Agency address:	
User telephone:	Dealer stamp valid

Intenance Records

Repair times	Date	Fault	Treatment measures	Repair work NO.